

Appendix 7(b)

# Regional Fostering Recruitment and Retention Hub

## Summary slides

# Policy background (DfE)

Three reviews were published last year, provided impetus and vision to transform children's social care.



The  
Independent  
Review of  
Children's  
Social Care



National  
Review into the  
murders of  
Arthur Labinjo-  
Hughes and  
Star Hobson



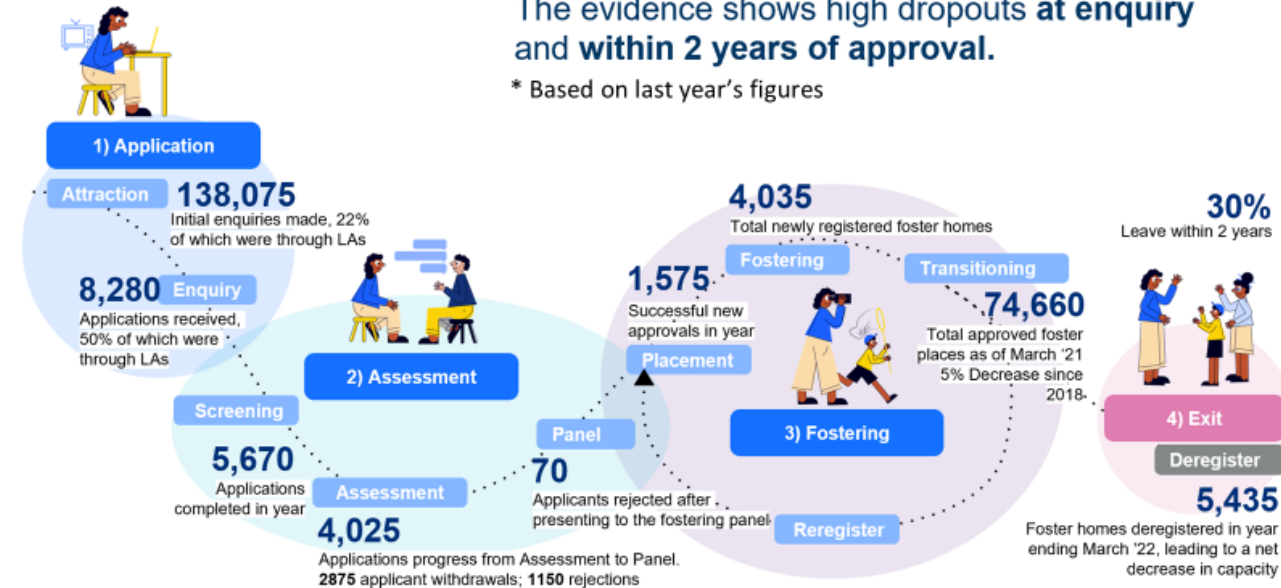
The  
Competition  
and Markets  
Authority study  
into Children's  
Social Care  
Placements

In the DfE's response we pledged to put loving homes at the heart of children's social care, and in the publication of Stable Homes, Built on Love, **we announced an investment of £27m in a fostering recruitment and retention programme to reform the foster carer's journey, offering additional support through known weak points in the system.** That funding has been spent on a pathfinder project, Foster with North East, and 9 additional regions.

In developing our response, we mapped the foster carer's journey through the system which shows high dropouts at enquiry and within two years of approval.

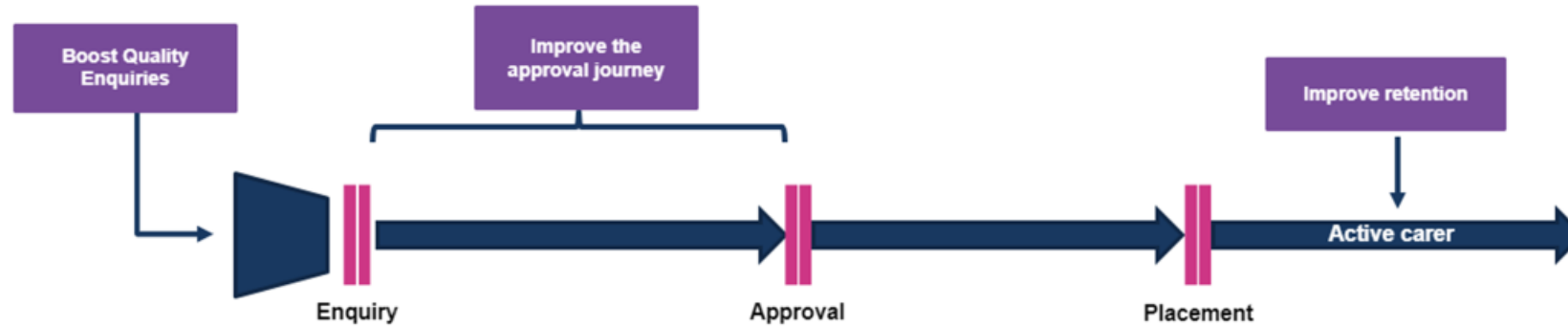
The evidence shows high dropouts at enquiry and within 2 years of approval.

\* Based on last year's figures



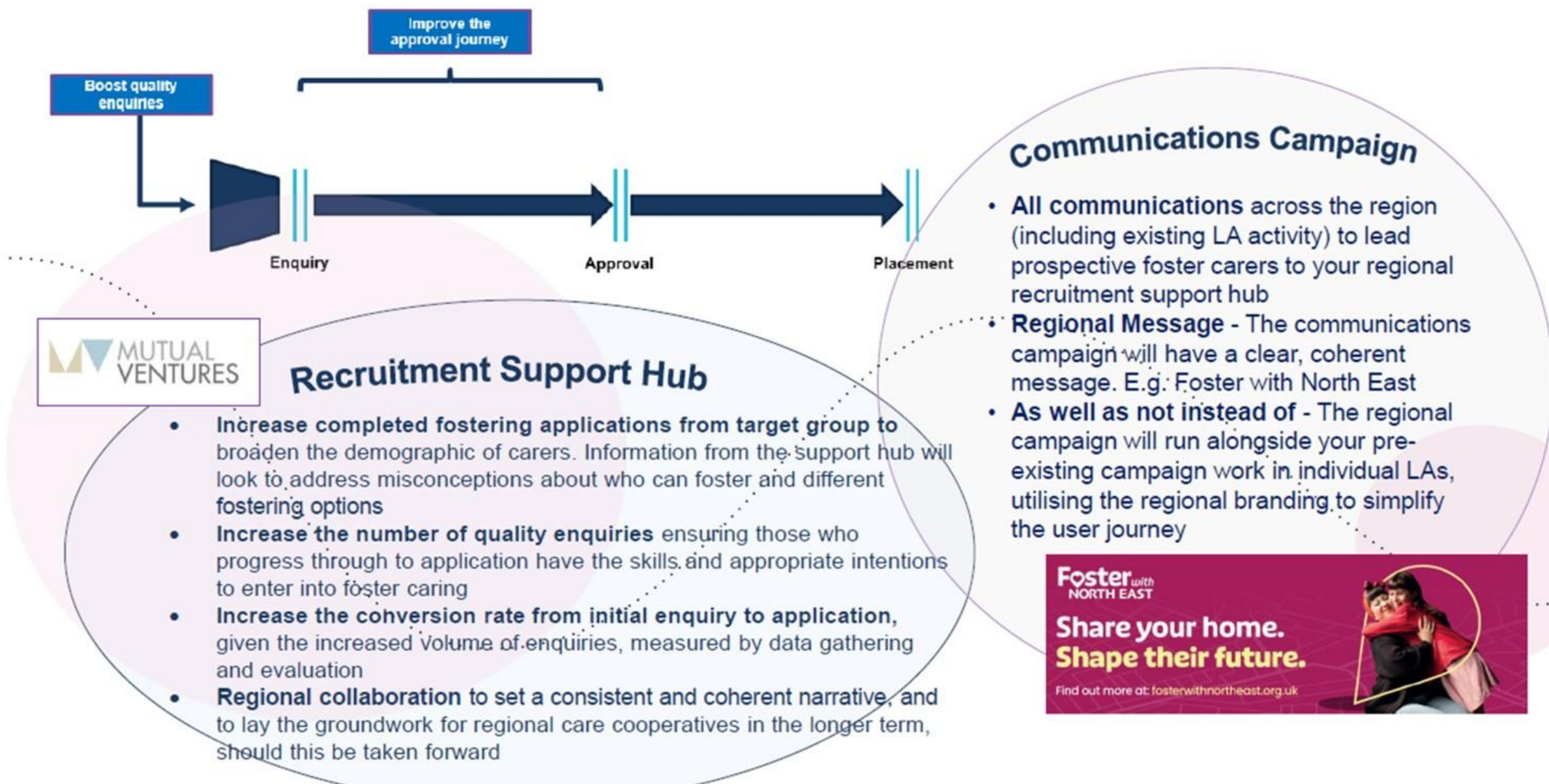
# Context

- The **programme is designed to deliver end-to-end improvements** that support boosting foster carer numbers.



- The programme includes:
  - A **recruitment support hub** to provide information about fostering and support alongside the assessment and approval process to maximise the number of people who take forward a fostering application
  - A **marketing campaign** to attract new foster carers
  - Roll out of **Mockingbird** - an evidence-based programme across the region **to support retention**

# Fostering Recruitment & Retention Programme – Recruitment Support Hub & Communications Campaign



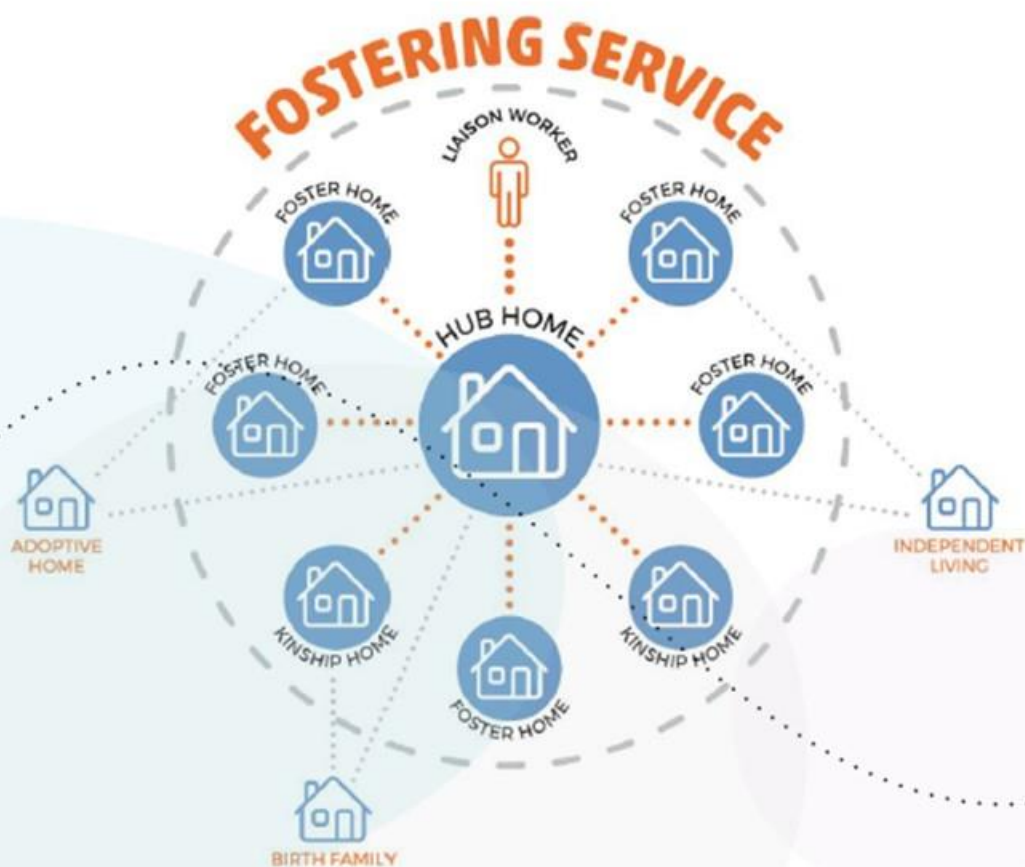
# Fostering Recruitment & Retention Programme - Mockingbird

Improve retention



Active fostering

- This programme is funding new 97 constellations across 90 LAs (7 to 10 carers in each constellation)
- Those who participated in Mockingbird were 82% less likely to de-register than households who did not participate.
- This will mean England has the most constellations in the world



The Fostering Network

